



# Pet Resource Guide



[www.spcabctn.org](http://www.spcabctn.org)



## Table of Contents

- 2** Rehoming Your Pet
- 11** Medical Resources
- 15** Behavior & Training
- 17** Pet Supply Resources
- 19** Hospice, Grief Support, and End of Life Services
- 21** Domestic Violence Assistance
- 23** Community Cats & Kittens
- 28** Pet-Friendly Housing
- 30** Military Deployment Options
- 32** Support for Other Species of Pets
- 35** Lost and Found Animals
- 35** Quick Reference Contact Sheet



# Rehoming Your Pet

We understand that circumstances in life can sometimes mean that you may find yourself in need of finding a new home for your pet or the pet of a loved one. If you're in this situation, we'd like to encourage you to try and re-home your pet directly rather than bringing them to the shelter. This is often a much more calming and comforting way for ownership to change hands for the pet, and means that you are able to be fully involved in the process.

We're here to help and can recommend some key tips and tricks to make the process go quite smoothly. If however, you feel you've exhausted all your options, know that you can of course contact us to discuss your choices.



Call us or email us during normal business hours of 12pm-5pm Tuesday-Saturday!



423.790.1915 or [spcabradleyco@gmail.com](mailto:spcabradleyco@gmail.com)

## Tips for Writing a Pet Description

One of the key components of rehoming a pet is sharing information with potential new families to help find a good match. It's tempting when writing these descriptions to share the details of why you are needing to find a new home for the pet, but remember that many people skim when reading long paragraphs and may find it more engaging to read about what to expect when living with this pet, what they enjoy, and the things that make them happy.

We recommend always being honest and forthcoming about your pet, but keeping the pet description largely positive is also important to encouraging interest.



Again, when we say keep it positive, we don't mean hiding the truth. But keep in mind that we all have different expectations of life with pets. A dog who chases or doesn't get along with cats may make a perfect pet for someone who is looking for a companion for their other dogs or a person with a cat allergy.

Some examples of keeping your language positive and matchmaking focused:

**INSTEAD OF:**

- Needs a lot of exercise
- Needs too much attention
- Isn't good with my kids
- Hates other animals

**TRY THIS:**

- Will make a great running partner
- Loves people / being by your side
- Needs the peace of a home without children
- Would prefer not to share a home with other pets / Would like to be your one-and-only

You can also use templates to help craft a pet description or bio for you pet if you need more guidance. Most prospective families want to know a bit about what to expect and what life will look like with this animal, so start there!

## BIO-WRITING ROADMAPS

• *for fast and effective pet bios* •

The 'roadmap' approach makes writing accurate, engaging bios easier when time and resources are limited! Try these tailored sets, or mix n' match.

**FAST AND  
SIMPLE**

MEET \_\_\_\_\_ !  
HER/HIS FAVORITE THING IS \_\_\_\_\_  
BUT HE'S/SHE'S NOT AS INTO \_\_\_\_\_  
HE/SHE NEEDS \_\_\_\_\_  
THE MOST IMPORTANT THING TO KNOW ABOUT  
\_\_\_\_\_ IS \_\_\_\_\_





HELLO, I'M \_\_\_\_\_ !  
MY FAVORITE THINGS ARE \_\_\_\_\_ & \_\_\_\_\_  
BUT NO \_\_\_\_\_ FOR ME, THANKS  
IF I WAS A DESSERT, I'D BE \_\_\_\_\_  
MY PERFECT DAY IS \_\_\_\_\_  
IF YOU LIKE \_\_\_\_\_ WE'D BE A GREAT TEAM!

A LITTLE MORE  
**PLAYFUL**

**HEARTS**  **SPEAK** FIND MORE TIPS, TRICKS, AND INSPIRATION AT  
[HEARTSSPEAK.ORG](http://HEARTSSPEAK.ORG)

For more resources on writing pet descriptions, including fill-in-the-blank tools or other language suggestions, visit [www.heartsspeak.org/edu](http://www.heartsspeak.org/edu) & search "bio writing"

## Other Tips for Matchmaking Success

A few other tricks to successful rehoming:

- Don't rule out potential new homes before you learn more. It can be tempting to put a lot of restrictions on what you think is the perfect new home for the pet, for instance "must have fenced yard" or "must work less than 40 hours per week". But consider that "perfect" may look different than you imagine: Someone without a fenced yard who walks the dog on a leash is arguably giving them more attention and exercise than letting them out the door into the yard. And someone who works 60 hours a week but splits their time between home and work, or hires a pet sitter, is still giving excellent attention
- Check your email regularly and use an email address you can view frequently. Rehoming websites will use that email to get in touch with you and allow potential new homes to ask questions, etc.



# Tips for Great Photos

In addition to the pet description, photos are really important to catching the attention of someone who might want to adopt your pet. Photos (and video clips!) are a great way for the potential new caretaker to connect with the pet. Try for about 4 different images to show variety!

Here are some quick tips for taking better cell phone photos at home:



## Get On Their Level + Fill Frame

Rather than stand and take a photo of a pet from above, crouch down so you're taking the photo more at eye level with them. Also try and be sure they are taking up most of the photo, rather than appearing as a small part of a larger photo. This helps more accurately show size and connect with their eyes.



## Use Natural Light + Avoid Harsh Sun

Oftentimes people think that a clear, sunny day is perfect for pictures -- but it's actually the opposite! Sunny days make for harsh shadows and squinting, which even affects pets! Look for a shady spot or a cloudy day and your photos will be gorgeous. Using natural light like this is preferable to florescent overhead lights.(even when indoors, just try to position things so the window is behind you, the photographer).



## Pay Attention to Background

To maximize connection and impact, try to take a photo without much clutter or distraction in the background -- we want the pet to be the star!



## Shoot for Eye Contact

Use a funny noise, a treat, or toy --- held right over the lens of your camera -- to get a photo where the pet is looking at you and making eye contact.



# Getting the Pet Ready for Rehoming

A healthy pet is easier to rehome so try and be sure that your pet is up to date on vaccines. If possible, reach out to your vet and ask for copies of your veterinary records to pass along to the new owners.

If your pet is not spayed/neutered, it's important to have that done before they are rehomed. You can see the "Medical Resources" section of this guide for more information on how and where to find low-cost options.

## Getting the Word Out

There are a few options for posting your pet on websites that specialize in rehoming and offer specific platforms for simple, safe and free ways of transferring ownership to a new owner.

### Rehome by Adoptapet.com

To list your pet on this site, visit [rehome.adoptapet.com](http://rehome.adoptapet.com) and create a profile. Not only does this site get seen by thousands of potential pet parents in your area, it also allows you to review applications for your pet and set up meetings with potential new families.

### Home to Home

Home to Home is another platform that allows you to post your pet -- but you need a local shelter to be associated with the profile you create. Visit [home-home.org](http://home-home.org) and search by zip code to find a shelter near you -- and if your local shelter is not participating you can request that Home to Home onboard them so you can get started.

### Rescue Me!

Rescue Me is a site that can help reach community members within 2 hours of you sharing your pets information. They email adopters in your area based on the breed of your pet and interest on their mailing list. Visit [rescueme.org](http://rescueme.org)



## **Using Social Media**

Once you post your pet on a rehoming site, you can then share the link to their profile on social media to help circulate it and get more eyes on them.

When you post on any social network to share your pet, try these quick tips for success:

- Tell a story. Sometimes a heartfelt story about your pet and your search for a safe place for them to land can help people understand your choice to rehome and help get the post shared to other potential adopters.
- Be descriptive. Use the same advice as you did when writing your pet description - be positive, share important basics (weight/size, age, preferences, etc).
- Choose your cutest / favorite photo. Grab attention and help show off their best side! Make sure it's a recent photo and accurately represents them
- Include your contact info or ask people to DM you. If there's a deadline for seeking the new home or other critical info share that too.

### Facebook

On Facebook you can not only share a link to Rehome or Home to Home, you can also seek out facebook groups or local pet groups in your area to post about your pet. If you're a member of local community groups (church, social clubs, community service orgs) you can ask the admin of the group if you're allowed to post there as well.

### Twitter or Instagram

If you're a regular user of either of these platforms, then definitely share your pet there and include hashtags like #rehome #adoptadog #adoptacat #petadoption as well as hashtags for your local area or neighborhood to make sure you're zeroing in on the right audience.

### Nextdoor

Nextdoor is a neighborhood or community based social network so really helps ensure you're posting to folks nearby.





## **Other Networks & Community Connections**

Consider other off-line connections you have to help get the word out. You never know who might be looking for a pet!

- Friends
- Family members
- Neighbors
- Co-workers
- Community contacts
  - School
  - Church, Synagogue, House of worship
  - Membership groups
  - Community-based organizations

You can also make flyers -- using the same basic information you used in your online pet description and a few great photos -- and post them in different locations around your community:

- Veterinarian
- Pet supply store
- Feed Store
- Coffee Shop
- Restaurants / Diners
- Work, school or other community bulletin boards

## **Recommended Resources**

Rehome By adopt a pet: <https://www.spcabctn.org/resources-faq>

Facebook rehoming in Cleveland TN:

<https://www.facebook.com/groups/937623196932205>



## Problem Solving and Solution Building

We know it's not an easy decision to rehome your pet. And it's often a decision that a lot of thought has gone into. However, if you find yourself confronting one specific issue or another, consider the solution board below.

### Rehoming Solutions

#### ISSUE

"I got a new job and there's no time for my pet"

"I can't afford my pet any longer because of extenuating circumstances." (Ex: job loss)

"My pet has health issues which I can't afford to manage."

"A sickness/injury is significantly preventing me from taking care of my dog"

"My pet is not getting along with the other pets in the home / showing signs of agitation.

"My pet has separation anxiety, or his energy is a mismatch for us"

#### POTENTIAL SOLUTION

Have you considered a doggy day-care or a dog walker?

Have you asked someone you already know if they can take care of the dog until you resituate yourself?

Have you checked out low-cost options in your area? (See Medical Resources in this guide)

If your situation is temporary, are there family or friends to help and take care of your pet while you're able to recover.

If they previously got along with other pets or just recently began to change behavior, consider taking them to a vet first to see if it might be caused by feeling unwell.

Are there things you could change about their exercise routine or mental stimulation? A bored pet can sometimes be destructive but activity can reduce this.



## **Meet & Greet: Interviewing Potential Adopters**

You want to find the best possible match for your pet, so the first step is transparency. Share with the future family any medical information, behavior information (to the best of your knowledge), the pet's personality and lifestyle in your home, and tendencies.

From there, some thoughtful questions can help you learn more about the prospective adopter and their family:

- What is a typical day like in your home?
- What qualities are you hoping for in a pet?
- What behaviors would be hard for you to tolerate or difficult to manage in a pet?
- Do you have other pets? Tell me about them
- Are their children in your family? If very young, will they be supervised with the new pet?
- What questions do you have for me about our life with the pet?

If it's an option for you, consider doing a trial sleepover where the pet goes to stay and you check back in. If you're able to take the pet back temporarily, let the new adopters know that you'd like that option if things do not work out.





# Medical Resources

*Please note this guide does not serve as an endorsement or promotion of any specific organizations and simply reflects currently available resources.*

## Low-Cost Vaccines / Veterinary Services

### Dixie Day Spay

[www.dixiedogsandcats.org](http://www.dixiedogsandcats.org)

Low cost Spay and Neuter surgeries, and low cost preventatives and vaccines

Call: (423) 476.7122

Email: [info@dixiedogsandcats.org](mailto:info@dixiedogsandcats.org)

### Keith Street Animal Clinic

[keithstreetanimalclinic.webs.com](http://keithstreetanimalclinic.webs.com)

Affordable pet wellness

Call: (423) 476.1804





## **Spay / Neuter Resources**

Dixie Day Spay.

[www.dixiedogsandcats.org](http://www.dixiedogsandcats.org)

Low cost Spay and Neuter surgeries, and  
low cost preventatives and vaccines

Call: (423) 476.7122

Email: [info@dixiedogsandcats.org](mailto:info@dixiedogsandcats.org)



# Financial Assistance / Funding for Medical Resources

## National Orgs

### Red Rover COVID-19 Relief

<https://redrover.org/2020/07/08/coronavirus-covid19/>

Help for urgent care and emergency boarding and a list of other national resources.

### Feeding Pets of the Homeless

<http://www.petsofthehomeless.org/>

Medical & food assistance for pets of the homeless.

### Brown Dog Foundation

<http://www.browndogfoundation.org/>

Help with prescription medications

### Onyx & Breezy Foundation

<https://www.onyxandbreezy.org/>

Assistance for medical care, food, and critical cases

### The Humane Society of the U.S. - Pet Support Resources

<https://www.humanesociety.org/resources/are-you-having-trouble-affording-your-pet>

An extensive list of resources, both national and organized by state -- for everything from medical to supplies, and other support.

### Waggle

<https://waggle.org/>

Submit your pet's profile and Waggle donors give to help crowdfund.

For pets with cancer visit

[wagglefoundation.org/riedelcody](http://wagglefoundation.org/riedelcody)

### Frankie's Friends

<https://www.frankiesfriends.org/>

Support for emergency and specialty medical care

### Shakespeare Animal Fund

<https://www.shakespeareanimalfund.org/>

Emergency care, especially COVID-19 related

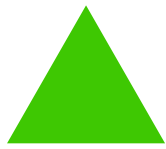
### The Pet Fund

<https://thepetfund.com/>

The Pet Fund has a grant program that provides assistance for medical issues

Email: [info@thepetfund.com](mailto:info@thepetfund.com)





# Behavior & Training

*Please note this guide does not serve as an endorsement or promotion of any specific organizations and simply reflects currently available resources.*

## National Resources

### Best Friends - Pet Training Resources

<https://resources.bestfriends.org/pet-training>

Body language, training tips, and enrichment

### ASPCA

<https://www.asPCA.org/pet-care>

Dog, cat, equine care tips

### Dr. Sophia Yin Dog Behavior Issues

[https://drsophiayin.com/resources/dog\\_behavior/](https://drsophiayin.com/resources/dog_behavior/)

Videos and articles to better understand dog behavior problems or questions

### The Jackson Galaxy Project

<http://www.thejacksongalaxyproject.org/Resources/Cat-Behavior-Resources>

Cat Behavior resource library



## Local Resources + Trainers

### Dog Whisperette

<http://www.dogwhisperette.com>

Serving dogs and families in TN, AL, GA, and NC for many years, we can assist you in changing your dog's behavior in just one day. Guaranteed!

Call: 423.661.9929

Email: dogsavior423@gmail.com

### Thriving K9's

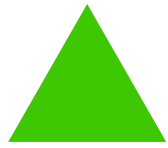
[www.thrivingk9s.com](http://www.thrivingk9s.com)

Brief description of sample org services and costs if known

Call: 423.284.8091







# Hospice, Grief Support, and End of Life Services

*Please note this guide does not serve as an endorsement or promotion of any specific organizations and simply reflects currently available resources.*

## National Resources

### Pet Peace of Mind

<https://petpeaceofmind.org/>

This organization helps hospice and seriously ill patients keep their pets  
(503) 363-0499

### The Pet Loss Support Page

<https://www.pet-loss.net/>

Hotlines and resources for dealing with grief

### ASPCA -Resources for End of Life Care

<https://www.asPCA.org/pet-care/general-pet-care/end-life-care>

Coping with end of life decision-making and pet hospice

### Best Friends - Pet Loss & Grief

#### Resources

<https://resources.bestfriends.org/article/pet-loss-and-grief-resources>

Links to different resources around the web

### The Association of Pet Loss and Bereavement

<https://www.aplb.org/>

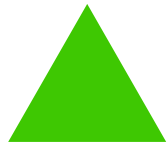
Extensive collection of resources

### International Association for Animal Hospice and Palliative Care

<https://iaahpc.org/>

A community of pet lovers dedicated to a respectful and dignified final journey for beloved pets





# Domestic Violence Assistance & Resources

*Please note this guide does not serve as an endorsement or promotion of any specific organizations and simply reflects currently available resources.*

## National Resources

### Red Rover - Domestic Violence Safe Escape Grants

<https://redrover.org/relief/dv-safe-escape-grants/>

Helps provide funding primarily for temporary boarding to allow families to escape domestic violence with their pets.

### Sheltering Animals of Abuse Victims

<https://www.saaavprogram.org/>

Offering a network of sheltering and grant-based resources to help victims of violence

### Sheltering Animals & Families

#### Together

<https://saftprogram.org/sheltering-animals-and-families-together-2/>

The SAF-T Program® works directly with domestic violence shelters to enable more domestic violence victims to leave abusive households without leaving their pets behind and at risk.

### Ahimsa House - National Directory

<https://ahimsahouse.org/get-help/directory/>

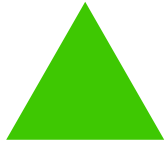
A state-by-state list of programs to help house and care of pets while escaping domestic violence situations. Plus links to other programs throughout the U.S.

### Red Rover - Safe Place for Pets

<https://safeplaceforpets.org/>

A directory of family violence shelters that have resources for pets





# Community Cats + Kittens

Community cats, sometimes called free-roaming or feral cats, are cats who have either never had any contact with people or their contact with people has diminished over time. They are different than stray or indoor-outdoor pet cats (cats who are owned and cared for but are either separated from their families or have a home but spend time outside).

For community cats, their home is outdoors and in the community. Typically these cats aren't likely to ever enjoy transitioning into a house and traditional pet lifestyle.

Community cats are spayed/neutered, vaccinated, and then returned to their community through a process called Trap Neuter Return or "TNR". You can often recognize those that have gone through this process by an "ear tip" - a missing tip of either ear. It's a universal sign that this cat has been spayed or neutered.

Why spay and neuter community cats? Without this measure of population control, cats living in the community can have too many litters of kittens, leading to poor quality of life and possible overpopulation issues. TNR helps community cats by relieving them of the stresses of mating and breeding, and protecting them from diseases.



# What to Do When You Find a Community Cat

If you find a community cat (remember, not a friendly stray --- For info on what to do if you find a friendly stray cat see the "Lost and Found" section of this guide), the first thing to do is look to see if the cat already has an eartip. The most common type of eartip is a flat quarter-inch taken from the top of the left ear, which is painlessly performed surgically while the cat is sedated for spay/neuter. Other TNR programs may use ear notches or use the right ear instead of the left. Ear-tipped cats have already been sterilized and rabies vaccinated, and can be left where they are found.

If no eartip is present, this cat has most likely not been fixed, and you can help by TNR'ing the kitty! Contact Dixie Day Spay for more information on how to bring in an outdoor kitty to be fixed and rabies vaccinated. We also occasionally have vouchers for free at the SPCA - call us to find out!

|

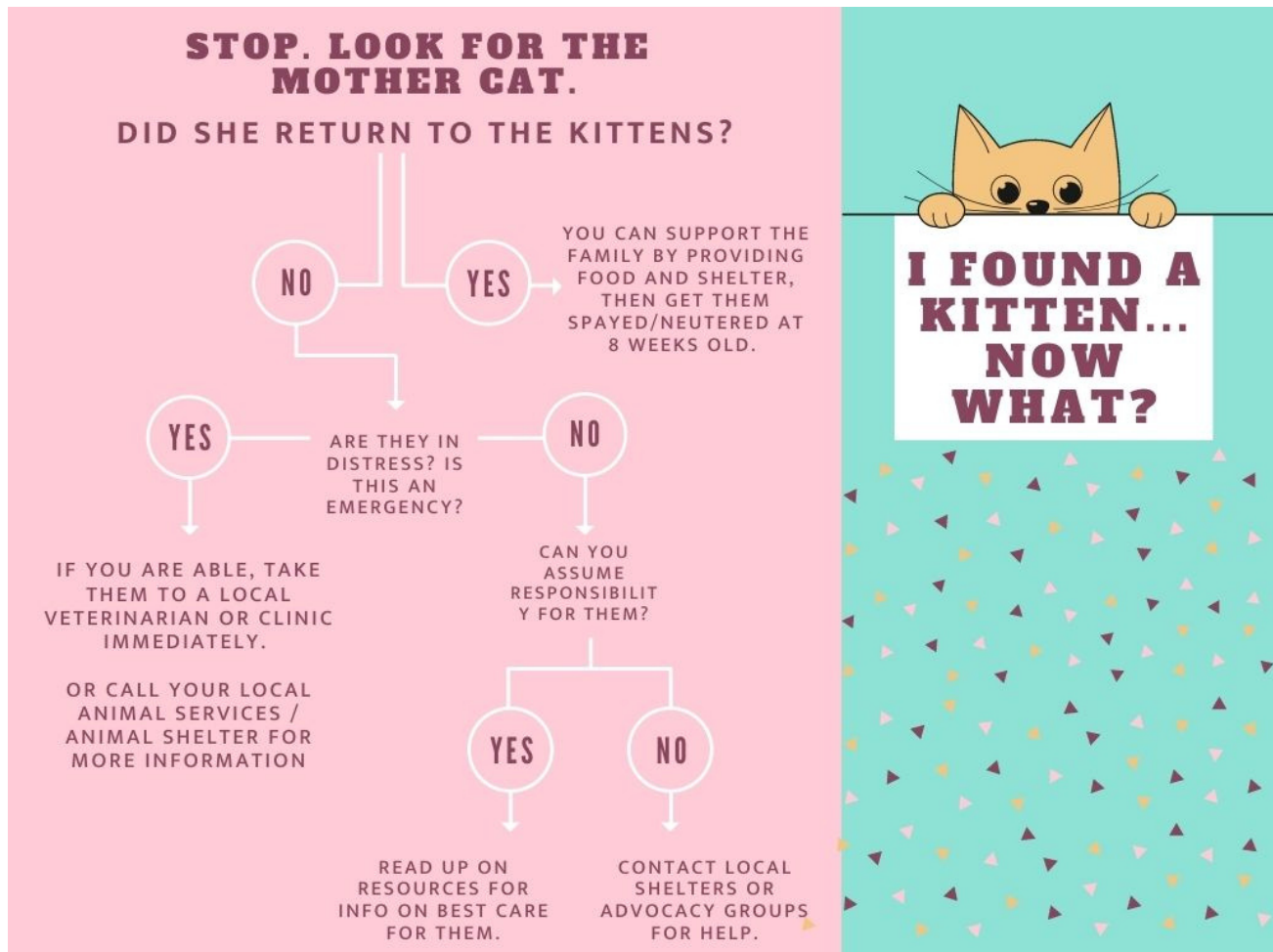


Dixie Day Spay - Low Cost Spay and Neuter  
423.476.2122



# What to Do If You Find Kittens

When kittens are very young, their best chances of survival are with their mom. If the kittens are in an unsafe locations, appear distressed or mom hasn't returned after several hours, first make sure they're warm, and then reach out to one of the local resources we've mentioned here.



## For More Information:

### The Kitten Lady

<http://www.kittenlady.org/>

Tons of resources on kitten care and what to do if you find kittens in the wild.

### National Kitten Coalition

<https://kittencoalition.org/>

Resources and education on kitten care and increasing kitten survival rates.



## Learn More / National Resources

### Alley Cat Allies

<https://www.alleycat.org/our-work/feral-friends-network/>

Resources for becoming more involved in community cat management or understanding more about community cats.

### Best Friends - Community Cat Resources

<https://bestfriends.org/advocacy/protecting-community-cats>

Find a TNR program near you and learn more

### ASPCA - Understanding Community Cats

<https://www.aspca.org/animal-homelessness/shelter-intake-and-surrender/closer-look-community-cats>





# Pet-Friendly Housing

*Please note this guide does not serve as an endorsement or promotion of any specific organizations and simply reflects currently available resources.*

## National Resources

### My Pit Bull is Family

<https://www.mypitbullisfamily.org/housing/>

The nation's largest housing database for nondiscriminatory pet policies

### People with Pets

<https://peoplewithpets.com/>

A searchable database for locating pet-friendly housing options.

### Petfinder - Steps to Finding Pet Friendly Housing

<https://www.petfinder.com/dogs/living-with-your-dog/finding-pet-friendly-housing/>

Tips and tricks for finding a place that welcomes you and your pet







# Military Deployment Options & Assistance

*Please note this guide does not serve as an endorsement or promotion of any specific organizations and simply reflects currently available resources.*

## National Resources

### Dogs on Deployment

<https://www.dogsondeployment.org/>

Provide assistance for pets of those currently serving, including boarding/fostering of pets for those deployed.

### 911 Foster Pets

<https://911fosterpets.com/>

Emergency fostering and networking to find emergency fosters in your neighborhood.

### PACT for Animals

<https://pactforanimals.org/>

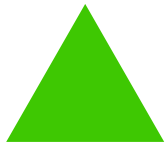
Foster homes for pets of deployed service members.

### Guardian Angel's For Soldiers' Pets

<https://gafsp.org/>

Network of fosters and other programs to support the pets of deployed soldiers.





# Support for Other Species of Pets

*Please note this guide does not serve as an endorsement or promotion of any specific organizations and simply reflects currently available resources.*

## Wildlife Resources

### Tennessee Wildlife

[www.tn.gov/twra.html](http://www.tn.gov/twra.html)

Call: (800) 372-39283333

Email: [TWRA.ASKRegion1@tn.gov](mailto:TWRA.ASKRegion1@tn.gov)

## Farm Animal Resources

### Egghead Animal House

[www.instagram.com/egghead\\_animalhouse/](https://www.instagram.com/egghead_animalhouse/)

Call: 702.301.3078

Email: [eggbertsmith@outlook.com](mailto:eggbertsmith@outlook.com)

### Willa B. Farms

[www.willabfarms.com](http://www.willabfarms.com)

Nashville, TN

Email: [willabfarmsandrescue@gmail.com](mailto:willabfarmsandrescue@gmail.com)





# Lost & Found Animals

Whether you've lost your pet or have found a stray pet, we have some important tips for you to follow -- and the advice is actually very similar for both scenarios! The best chances for reunification between owners and lost pets happens close to home, so by following this advice for either case we hope to increase the chances that a pet and its family will find one another quickly.

## If You've Found a Pet

Often times, one of two instincts kicks in when someone finds a pet -- leave it and hope it finds its way home or pick it up and take it the shelter. But there's a third and critical way to handle this that could mean helping reunite that pet with its family much more successfully.

If possible, we're going to ask that you look for the owners in your area and possibly even foster that animal for the short term. This leaves space in the sheltering system for pets in emergency situations and critical need, but more importantly often means that the lost pet can find its home -- whereas once at the shelter those chances of reunifications start to go down.

We don't encourage this because we don't want to help animals anymore -- quite the opposite! We want to try and get as many pets back into the loving arms of their families and over time animal shelters across the country have realized this happens better in the community. However, we're still here if you need us!



423.790.1915



423.790.1915



## **Step One: Walk Around the Neighborhood**

Simply by walking around your neighborhood, you may run into someone who is searching for their pet. Or, you may pass other neighbors or community members (delivery drivers, postal workers, landscapers, pool technicians, etc often know the pets in the homes on your street!) who know the pet and can help identify where they live. In some cases, the lost pet may even lead you back to their home.

## **Step Two: Check for a Microchip**

A microchip is small (grain of rice-sized) tag implanted in the pet's skin (typically between the shoulder blades) that links to the owner's information when scanned with a special microchip scanner. Call local vet offices or contact the shelter to see if they can scan the pet for one! Sometimes even local fire departments or other community services have microchip scanners as well.

## **Step Three: Notify Local Shelters**

Contact:

SPCA of Bradley County: 423.790.1915 or [spcabradleyco@gmail.com](mailto:spcabradleyco@gmail.com)

Cleveland Animal Control: 423.479.2122



## Step Four: Get the Word Out

Social media may be a way to capture attention of not just the owner but friends, family members or community members who may recognize the pet. Be sure to post a photo or two (or even a video clip) with the information about where the pet was found, anything notable about their collar or markings, as well as your contact information and where the pet is currently being housed.

You can also make and distribute flyers around the community. Make sure the photo is large and easily seen, include where he/she was found, and basic contact information for yourself. Start by posting these around your neighborhood, then begin to branch out to nearby locations, with a special focus on essential needs -- gas stations, grocery stores, bodegas or convenience stores, parks, community centers, churches / synagogues / houses of worship.

## Step Five: Upload the Pet to FindingRover.com

Finding Rover is an app and website that uses facial recognition technology to help reunite pets with owners, faster. Click on "Found Pet" on their site or app and add a photo of the found animal along with details about where he/she was found. Lost animals who look like the pet will show up and may help lead you to the lost animal.



## If You've Lost a Pet

Similar to the process for finding a pet, we're going to instruct you to follow a few key steps to try and find your pet faster.

- Immediately do a search of the neighborhood and surrounding areas to see if you can locate or spot the pet. If the pet seems to be running away every time you get close, try to go against your instincts and rather than chase, see if you can make a game of you running in the opposite direction. Sometimes this can cause the pet (especially dogs) to decide to engage and chase you instead!

As you search, alert neighbors or community members you encounter so they can keep an eye out for the missing pet.

- Call local shelters, friends, and family who can help or get the word out, and pitch in to find the missing pet. Even after the initial few hours, remember to check in with the shelter daily.
- Take to social media to mobilize your community of friends and followers. Post to lost and found groups and other community-related groups
  - LOST & FOUND PETS: Bradley County, TN | Facebook
  - (1Bradley County, TN - Lost Dogs, Cats & Pets | Facebook
- Use traditional methods of getting attention like flyering or continuing to do walk-thrus of the neighborhood with information. Post these in your neighborhood and then in key community locations, working outward from your home in the most-likely pattern. Don't give up and don't lose hope!



## Preventative Measures

There are a few things you can do to both prevent your pet from becoming lost as well as being prepared if that should happen. Let's dive in:

- Have your pet wear a collar and up-to-date tags at all times. Even if microchipped this is the fastest way for them to get home when found.
- Get your pet microchipped! We offer microchips at our facility for \$20! This includes lifetime registration.
- If your pet is already microchipped, check to make sure it's properly registered and your contact information is up to date. Visit:  
<https://www.foundanimals.org/microchip-registry/owners/>
- Upload their photo to Finding Rover's database in the event they are lost.  
[www.findingrover.com](http://www.findingrover.com)
- Keep them safe when you're not home by bringing them inside, using a crate, or whatever method of containment works best for you and the pet.
- Keep them safe when out and about by leashing dogs when out on walks, or by simply leaving pets home if the occasion calls for it.

*Thank you!*



# Quick Reference Contact Sheet



1570 Johnson Blvd SE Cleveland, TN 37363



423.790.1915



[spcabradleyco@gmail.com](mailto:spcabradleyco@gmail.com)



<https://www.spcabctn.org>





# Acknowledgements



*Many thanks for inspiring this guide go to  
Norfolk Animal Care & Adoption Center  
and Jacksonville Humane Society.*



The template and base content for  
this guide was designed by



[www.heartsspeak.org](http://www.heartsspeak.org)

In partnership with Best Friends,  
for their Network Partners



[www.bestfriends.org](http://www.bestfriends.org)